

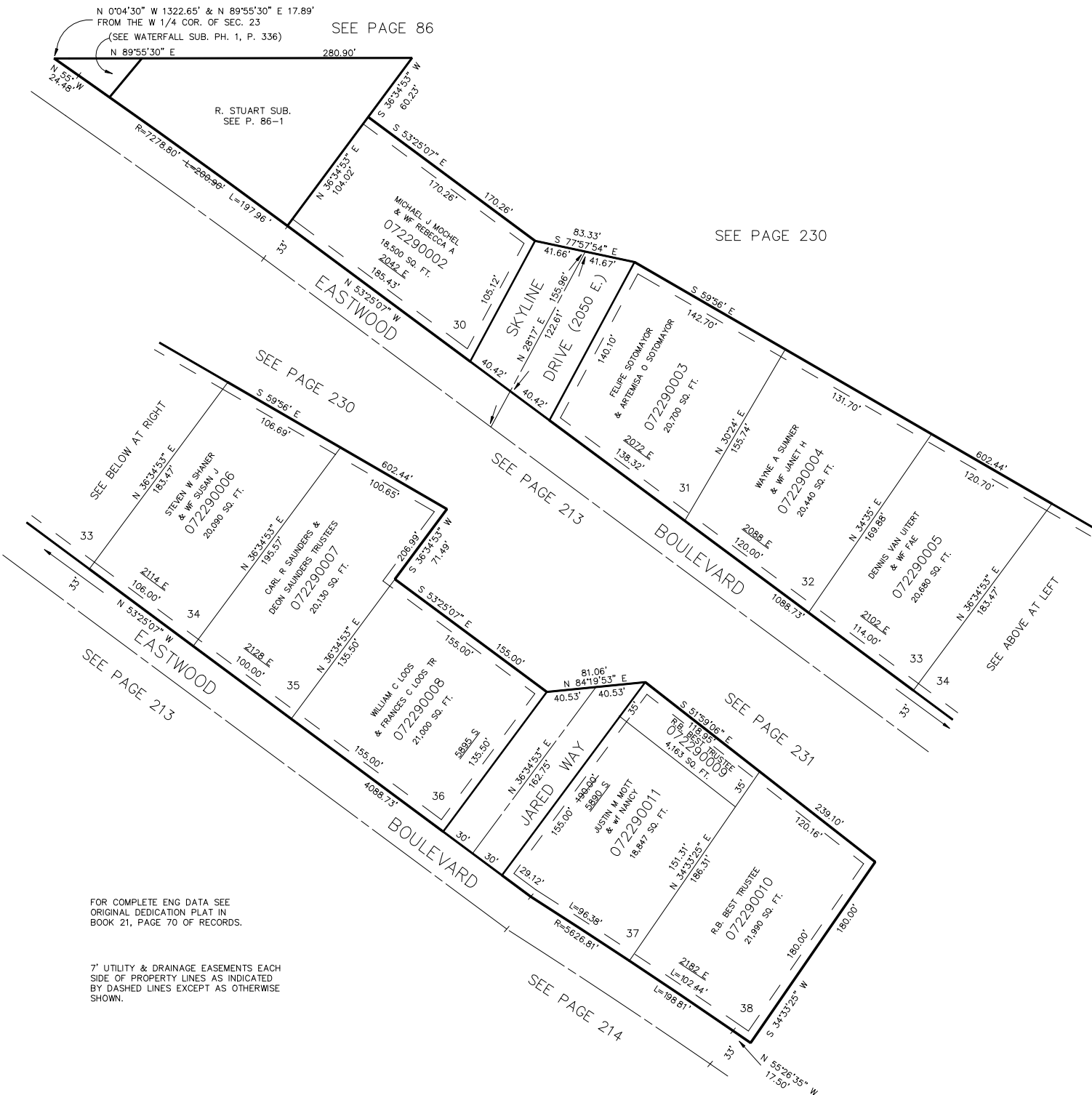
PART OF THE NW 1/4 SEC. 23, T.5N., R.1W., S.L.B. & M.  
**UINTAH-HIGHLANDS SUBDIVISION NO. 2**

LOTS 29 - 38

IN WEBER COUNTY

SCALE 1" = 60'

TAXING UNIT: 159



N 0°04'30" W 1322.65' & N 89°55'30" E 17.89'  
 FROM THE W 1/4 COR. OF SEC. 23  
 (SEE WATERFALL SUB. PH. 1, P. 336)  
 N 89°55'30" E 280.90'

SEE PAGE 86

SEE PAGE 230

SEE PAGE 230

SEE PAGE 213

SEE PAGE 231

SEE PAGE 213

FOR COMPLETE ENG DATA SEE  
 ORIGINAL DEDICATION PLAT IN  
 BOOK 21, PAGE 70 OF RECORDS.

7' UTILITY & DRAINAGE EASEMENTS EACH  
 SIDE OF PROPERTY LINES AS INDICATED  
 BY DASHED LINES EXCEPT AS OTHERWISE  
 SHOWN.

SEE PAGE 214